

Traffic Control

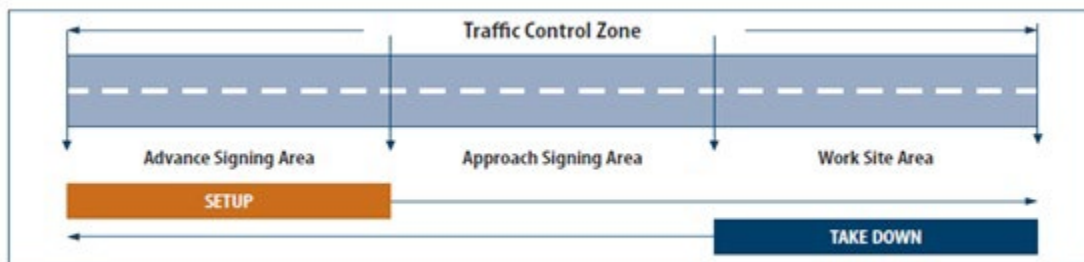
Toolbox Talks

Discuss with crews on _____

Employees who work on roadways, highways, and bridges are exposed to risks from vehicular traffic and machinery. Employees who set up and take down traffic control devices are also at risk.

Traffic cones, barrels, concrete barriers, and trained traffic control persons (signalers) are some of the controls to keep employees safe from vehicular traffic. Controls for traffic on highways and bridges may differ depending on the posted speed, number of lanes, and the type of work being carried out.

Proper signage must always be present and visible in Traffic Control Zones to protect employees, and to advise the motoring public of work being completed on or near the highway. An example of how to set up and take down a Traffic Control Zone is below:



To reduce their risk of injury from road traffic, workers and crew leaders can take the following actions:

- Wear high visibility clothing with a fluorescent background or reflective materials, including vests, arm bands or hats.
- Be aware of your surroundings and identify potential hazards.
- Stay out of lanes or areas where walking is prohibited.
- Make sure you are aware of and understand hand and other communication signals that will be used on the jobsite.
- Listen for reverse-signal alarms.

- Use traffic control devices such as signs, warning signals, paddles and concrete barriers consistently throughout the entire work area.